

# True Presence

DALI-2 APC - concealed  
 EAN 4007841 057961  
 Article number 057961



high frequency sensor 360°



Movement Ø 15 m



Presence Ø 15 m



True Presence Ø 9 m



brightness



2 - 12 m



2 - 2000 lux



5 sec - 60 min



KNX



IP20

## Function description

The world's first true presence detector! No unnecessary stay-ON times any more – no unnecessary electricity costs. Precision high-frequency measurement of the surrounding area provides 100 per-cent reliable detection. The True Presence detector reliably identifies whether persons are present or absent over an area of 64 m<sup>2</sup> – on the basis of the body's micro movements as well as human vital functions, such as breathing in and out, or shoulder movement. The new standard in building automation. Easy to control via app and Bluetooth.

## Technical specifications

Dimensions (L x W x H)	50 x 103 x 103 mm
With motion detector	Yes
Manufacturer's Warranty	5 years
Settings via	Bluetooth
With remote control	No
Version	DALI-2 APC - concealed
PU1, EAN	4007841057961
Type	Presence detector
Application, place	Indoors
Application, room	classroom, lecture hall, one-person office, open-plan office, high-bay warehouse, production facilities, conference room / meeting room, hotel room, care room, duty room, recreation room, dining hall / staff restaurant, changing room, kitchenette, sports hall, reception / lobby, WC / washroom, warehouse, Indoors

HF-system	7,2 GHz
Detection	also through glass, wood and stud walls
Detection angle	360 °
Angle of aperture	160 °
Sneak-by guard	Yes
Capability of masking out individual segments	No
Electronic scalability	Yes
Mechanical scalability	No
Reach, radial	Ø 15 m (177 m <sup>2</sup> )
Reach, tangential	Ø 15 m (177 m <sup>2</sup> )
Reach, presence	Ø 15 m (177 m <sup>2</sup> )
True Presence reach	Ø 9 m (64 m <sup>2</sup> )
Transmitter power	< 1 mW
Functions	Selecting programmed lighting scenarios, Semi-/fully automatic, Constant-lighting control ON-OFF,

# True Presence

DALI-2 APC - concealed  
 EAN 4007841 057961  
 Article number 057961



## Technical specifications

Colour	white
Colour, RAL	9003
Includes corner wall mount	No
Installation site	ceiling
Installation	Concealed wiring, Ceiling
IP-rating	IP20
Ambient temperature	from -20 up to 50 °C
Material	Plastic
Mains power supply	220 – 240 V / 50 – 60 Hz
Power consumption	1 W
Steuerausgang, Dali	Broadcast 64 electronic ballasts / Addressable
Technology, sensors	High frequency, Light sensor
Mounting height	2,00 – 12,00 m
Mounting height max.	12,00 m
Optimum mounting height	2,8 m
Montagehöhe max. True Presence Erfassung	4,00 m

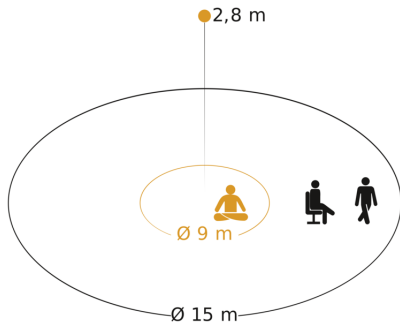
	Lighting scenario, Manual ON / ON-OFF, Neighbouring group function, Normal / test mode, TouchDIM function
Twilight setting	2 – 2000 lx
Time setting	20 s – 60 Min.
Basic light level function	Yes
Basic light level function time	1-60 min, all night
Main light adjustable	10 - 100 %
Twilight setting TEACH	Yes
Constant-lighting control	Yes
Interconnection	Yes
Type of interconnection	Master/slave
Interconnection via	Bluetooth, DALI bus
Product category	Presence detector

# True Presence

DALI-2 APC - concealed  
 EAN 4007841 057961  
 Article number 057961

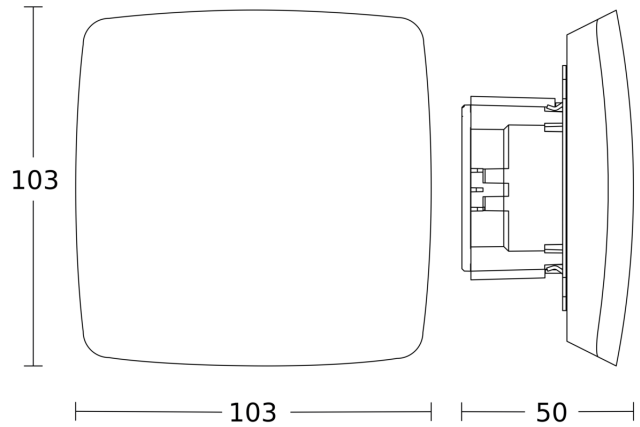


## Detection Zone

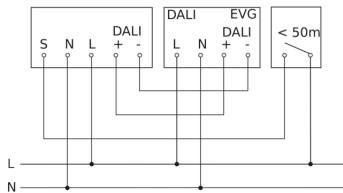


Possible mounting height: 2,00 m - 12,00 m  
 Orange: True Presence  
 Black: movement and presence

## Dimension Drawing



## Master circuit diagram



## Master/slave interconnection circuit diagram

